



# SAMI SOLUTIONS

## SAMI's Crack Sealing



Crack Routing & Sealing Solution No. 2

# SAMI's Crack Sealing

- a cost effective way to prevent major pavement repairs



*Half this transverse pavement crack has been crack sealed. As you can see on the far side, there is extensive transverse cracking and asphalt pavement deterioration where the crack sealing treatment was not carried out. The treated section on the near side has resisted further deterioration.*

When included in a regular pavement maintenance programme, SAMI's unique crack/joint sealing service has proven to be a cost effective way to prevent major periodic pavement repairs.

Councils and State Road Authorities throughout Australia have successfully used the service on a wide variety of pavement types, in all traffic conditions, illustrating its versatility and durability.

SAMI engineers took several core samples from a variety of deteriorating pavements to demonstrate the effects of water entering the surface layer.

The photos (overleaf) show extensive surface cracking, erosion at the interface of the road base and the asphalt, as

well as in the road base material. If treated early these situations can be managed economically.



*A transverse crack in this pavement was not sealed and has allowed water to enter the road base. Further deterioration will occur unless the crack is properly sealed as the ingress of water to the road base below will cause softening and pavement deflections leading to pavement failure.*



A core sample of 60mm asphaltic concrete on road base showing erosion at the interface of the road base and the asphalt, as well as in the road base material. This is caused by the ingress of water through the crack in the concrete.



The far side of this asphaltic concrete pavement was sealed by SAMI Road Services. The treated crack shows no signs of further deterioration. As you can see on the untreated near side of this pavement, there is extensive cracking and deformation.

## SAMI's Crack Sealing an essential part of pavement maintenance

### Crack Sealing - Recommended Treatment by the Australian Asphalt Pavement Association

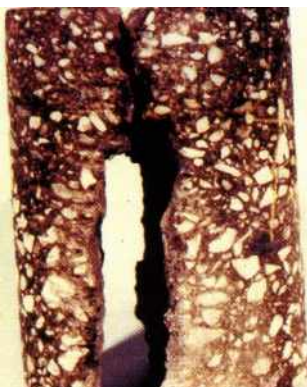
Crack Sealing is now seen as an essential part of pavement maintenance. If untreated, pavement cracks and joints will allow water to infiltrate the

road base, causing destabilisation, which in turn causes more surface cracks to appear, which allows more water to enter and so on. This cycle of deterioration can be stopped by Crack Sealing - if used early enough.

SAMI Road Services offers

a full crack and joint sealing service including SAMIprime primer and SAMIfilla HM sealer plus expertise in ensuring the correct preparation of the joint or crack.

Refer SAMI Pty. Ltd.'s Technical Bulletin #27 and #50.



A core sample showing a 60mm asphalt concrete layer on road base which has been extensively eroded from the ingress of water through the surface crack. A regular cost effective crack sealing maintenance programme would have prevented the enormous costs now required to repair this pavement.



A core sample of a water-effected pavement surface showing extensive cracking. Crack Sealing, using appropriate and suitable products, will prevent these types of situations, if treated early enough. Crack Sealing with SAMIfilla HM seals the crack/joint and keeps water out.



For further information on any of the products featured in this Case Study or any of SAMI's other specialist road maintenance products and services, please contact:

SAMI Pty Limited A.C.N. 001 089 416  
12 Grand Avenue, Camellia, NSW 2142  
Telephone (02) 9638 0110. Facsimile (02) 9638 4090.

